



Villa Appiani

INCLUSIVE HOTEL

Best Western and L'abilità Onlus

working together to welcome guests with Autism Spectrum Disorders (ASD).

Best Western Italia and L'abilità Onlus have launched a project dedicated to guests with Autism Spectrum Disorders.

Inclusive Hotel is the name of the initiative and it aims to guarantee an **absolutely positive** stay in the hotel to people with **Autism Spectrum Disorders**, both children and adults together with their families and their caregivers.

This guide is dedicated to those that want to **start travelling again**.

The **services** and **strategies** listed in the guide are helpful in organizing the trip and ensure a positive and welcoming experience in the hotel, guaranteeing a sense of **wellness** and **inclusion**.

To supplement the information provided, **Augmentative and Alternative Communication Tables** on the hotel itself and on the destination can be found in the dedicated rooms as well.

We wish you a pleasant stay.

General Information

Best Western Villa Appiani is located in **Trezzo sull'Adda** in Via Adriano Sala 17.

The hotel staff has been **trained** and is **aware** of the characteristics of people with **autism spectrum disorders**, of their special needs, and knows how to make the hotel **fully inclusive**.

Mattia Balconi is responsible for the Inclusive Hotel project at Best Western Villa Appiani.

You can contact him by e-mail at mattia.balconi@villappiani.it or by phone on +39 335.6676798.

Do not hesitate to contact him:

- for more information
- to book a room that is adequate to the needs of a person with ASD
- to communicate any special needs
- to communicate your time of arrival



Check-In and Check-Out

The Reception desk of **Best Western Villa Appiani** is a crystal table with a wood base.

The lobby is small and cozy. At peak times **crowding** and **increased waiting times** could induce **sensory overload**.

During the day the most crowded times are:

- between 08:00am and 11:00am
- between 05:30pm and 07:30pm

It is therefore advisable to check-in and check-out outside these hours.

Free parking available.



Common areas

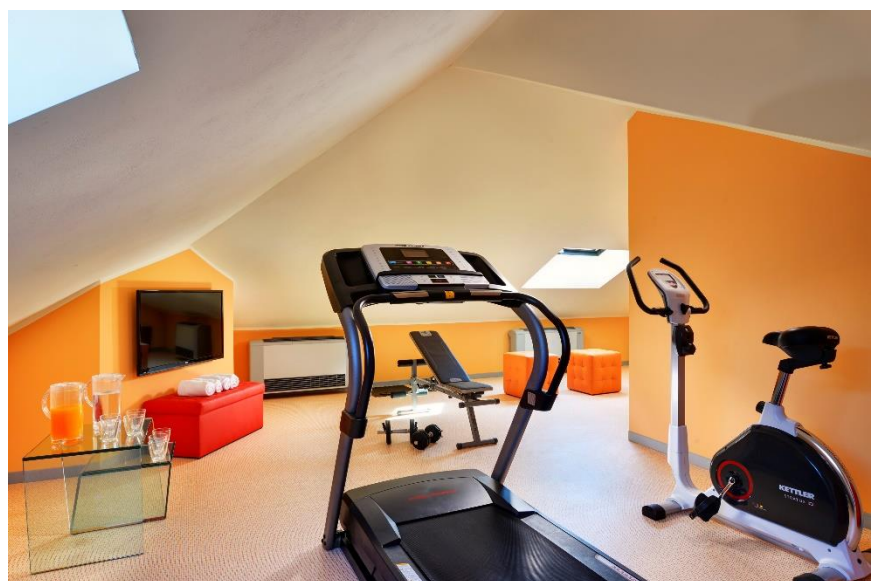


No neon lighting.



Low volume background music.

spaces	location	characteristics
Bathroom	Ground floor	<ul style="list-style-type: none">• faucet with automatic sensor• prints on walls• paper towels• decorative plants
Restaurant	Ground floor	<ul style="list-style-type: none">• accessible from the hall through the corridor• 2 indoor spaces (50pax)• Outdoor courtyard space (80pax)
Lobby	Ground floor	<ul style="list-style-type: none">• besides the hall you can find 2 more small rooms with tables (mirror tops), comfortable seats and a corner equipped for business (PC, printer, TV).
Fitness Centre	Second floor	<ul style="list-style-type: none">• accessible only by stairs• treadmills, stationary exercise bikes• coloured sofa



Room

The rooms dedicated to clients with ASD are equipped with features that can **help** in the case of **atypical sensory reactivity**:

- There are no neon lights but soft lighting
- The room is located far from noise sources
- Cleaning products are fragrance free
- Air fresheners are not used

The **bedding** is white and a duvet is available to guests.

For specific needs, guests are allowed to bring with them their own **personal items** (**blankets** or **cushions**) and the staff will make the bed.

There is a window located at 1.45 meters from the ground, with security bars.

There are two bathrooms in the room: one with a sink and a toilet and one with a sink and a shower.

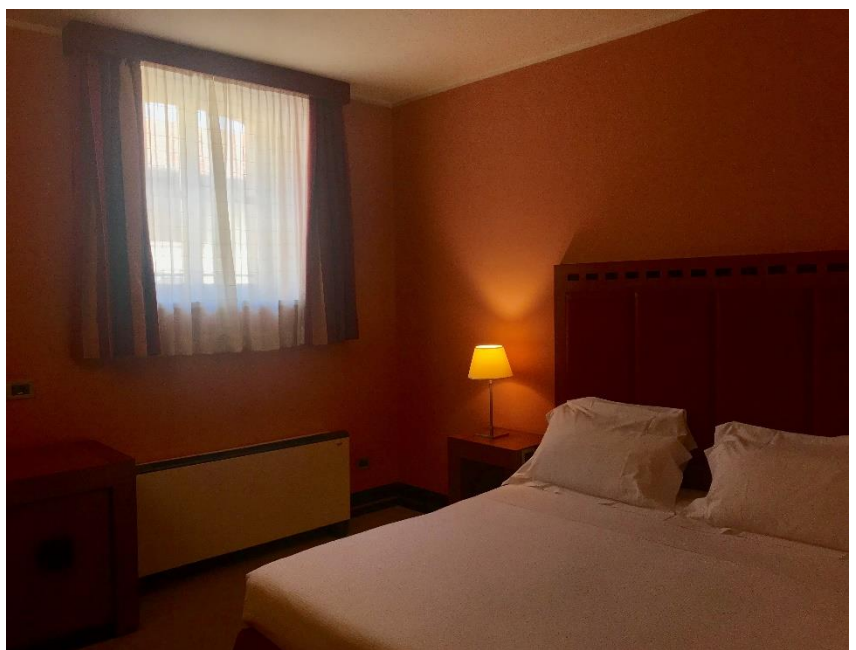
It is possible to add another bed/crib.

For **room service** please dial 802.

Please contact 9 for any **assistance** you may need.

You will also find **augmentative and alternative communication** material in your room concerning:

- Breakfast menu
- Rules of behaviour
- Communication tables
- An information sheet on Trezzo sull'Adda



Restaurant

The **La Cantina restaurant** is located on the ground floor of Best Western Villa Appiani and it is also open to outside customers.

A table will be reserved for you in an area of the restaurant free from anything that could induce sensory processing disorder, away from busy passageways during opening times (from 12:30pm to 2:30pm and from 07:30pm to 10:30pm).

The times of **increased client influx**, that may lead to a higher risk of sensory overload are:

- between 12:30pm and 1:30pm
- between 7:30pm and 9:00pm

Background music is played at a low volume.

Guests can bring their **own food and drink** at the table.

If you communicate any **special needs** in advance, the hotel kitchen will do their best to satisfy your requests.

You will also find in your room, the bar and the breakfast menus with **augmentative and alternative communication** symbols.



Inside restaurant room



Outside restaurant room

Hotel Information

Best Western Villa Appiani is located in **Trezzo sull'Adda**, between **Bergamo** and **Milan**, just a few minutes' drive from the motorway **A4** exit **Capriate San Gervasio**.

The hotel is also close to **Milano Linate** and **Bergamo Orio al Serio** airports.

For our younger guests, just a few minutes' drive from **Best Western Villa Appiani** is the **LEOLANDIA** Amusement Park, where you can meet all the characters your children love, and **LE CORNELLE** wildlife park. [Contact us for more information and to book tickets at discounted rates!](#)

In our hotel, we have a children's area for kids of all ages, **Bimbilandia**, which can be exclusively reserved.

It is open 7 days a week and it is located on the second floor, accessible by

